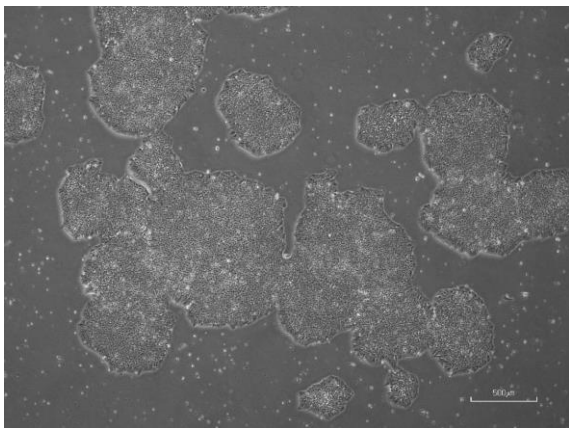
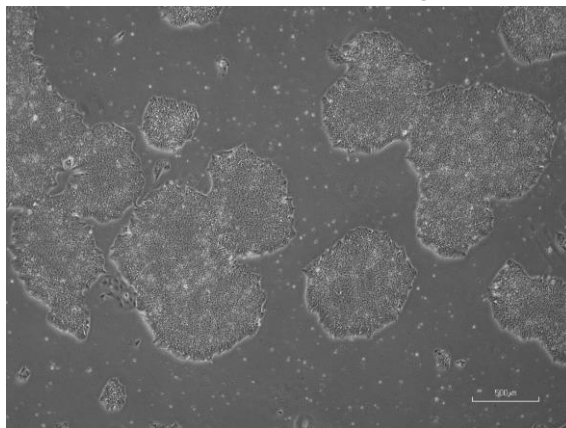


【 CiRA-jk-0104 】 Morphology of iPSC colonies

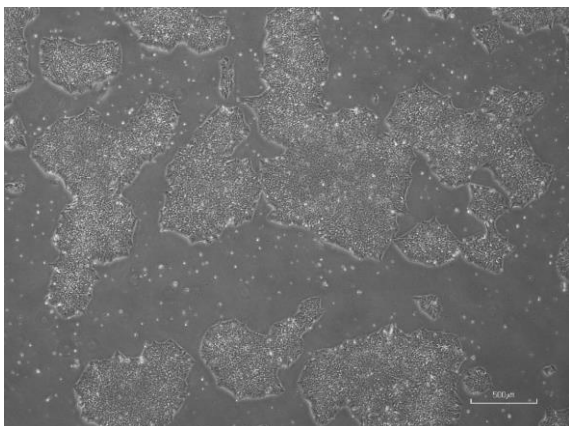
CiRA-jk-0104-A: passage-3



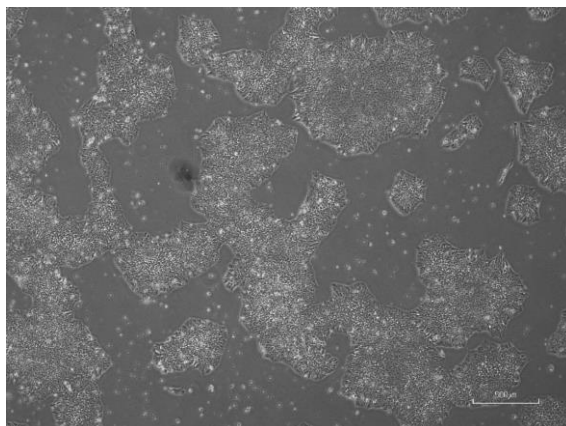
CiRA -jk-0104-B: passage-3



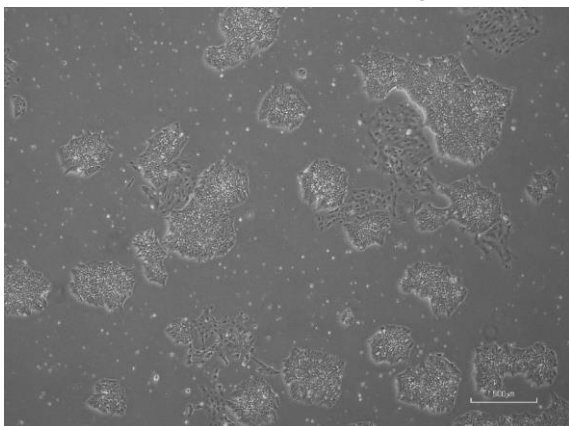
CiRA -jk-0104-C: passage-4



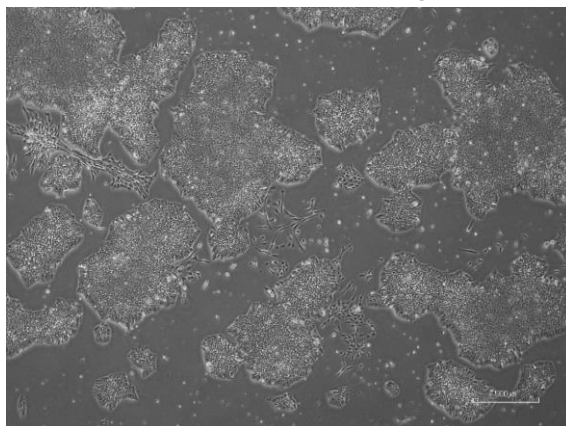
CiRA -jk-0104-D: passage-4



CiRA -jk-0104-E: passage-3



CiRA -jk-0104-F: passage-4



(All images were captured at 4x magnification)